

Drawing



Tools for Chefs

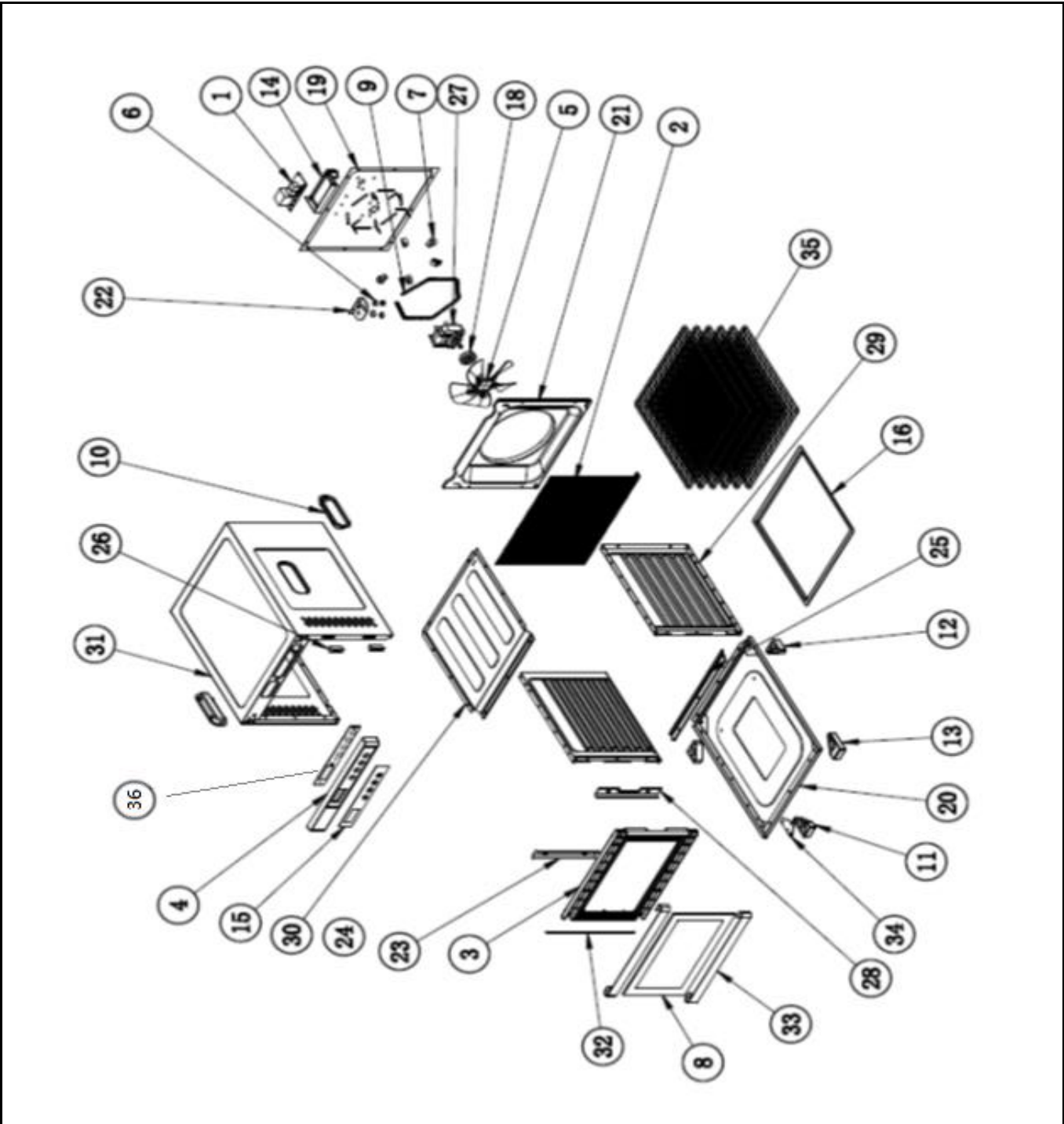
Hendi B.V.  
 Steenoven 21  
 3911 TX Rhenen  
 The Netherlands

Batch #  
 HK033919 and  
 up


Appliance part#  
**229033**

Description  
 Food dehydrator Profi Line 6-Tray

|          |                               |            |     |
|----------|-------------------------------|------------|-----|
| Date     | 25-06-2020                    | Revision # | 1.0 |
| Revision | First Bill of Materials (BOM) |            |     |



**Bill of materials (BOM)**

|   |                    |                        |
|---|--------------------|------------------------|
|  <b>HENDI</b><br>Tools for Chefs<br><b>Hendi B.V.</b><br>Steenoven 21<br>3911 TX Rhenen<br>The Netherlands | <b>Batch #</b>     | <b>Appliance part#</b> |
|   | HK033919 and up    | <b>229033</b>          |
|   | <b>Description</b> |                        |
| Food dehydrator Profi Line 6-Tray   |                    |                        |


|                 |                               |                   |     |
|-----------------|-------------------------------|-------------------|-----|
| <b>Date</b>     | 25-06-2020                    | <b>Revision #</b> | 1.0 |
| <b>Revision</b> | First Bill of Materials (BOM) |                   |     |

| Item | Description             | Part#  | Quantity | Remark                             | Picture |
|------|-------------------------|--------|----------|------------------------------------|---------|
| 1    | Main PCB                | 975084 | 1        | Incl. item 36                      |         |
| 2    | Backside mesh housing   | n/a    | 1        |                                    |         |
| 3    | Door frame              | nss    | 1        | Available as 975183                |         |
| 4    | Control panel           | n/a    | 1        |                                    |         |
| 5    | Fan blade               | nss    | 1        |                                    |         |
| *    | Fan complete            | 975176 | 1        | Incl. item 5, 18 and 27            |         |
| 6    | Ceramic ring            | n/a    | 4        |                                    |         |
| 7    | Ceramic insulator       | n/a    | 5        |                                    |         |
| 8    | Door complete assembly  | 975183 | 1        | Incl. item 3, 8, 23, 28, 32 and 33 |         |
| 9    | Heating element         | 975190 | 1        |                                    |         |
| 10   | Handle                  | n/a    | 2        |                                    |         |
| 11   | Foot (front-left)       | n/a    | 1        |                                    |         |
| 12   | Foot (rear)             | n/a    | 2        |                                    |         |
| 13   | Foot (front-right)      | n/a    | 1        |                                    |         |
| 14   | Main PCB bracket        | n/a    | 1        |                                    |         |
| 15   | Glass cover display     | n/a    | 1        |                                    |         |
| 16   | Plastic driptray        | 941461 | 1        |                                    |         |
| 17   | Door handle             | nss    | 1        | Not shown on drawing               |         |
| 18   | Fan bracket             | nss    | 1        | Available as 975176                |         |
| 19   | Back cover              | n/a    | 1        |                                    |         |
| 20   | Bottom cover            | n/a    | 1        |                                    |         |
| 21   | Air duct                | n/a    | 1        |                                    |         |
| 22   | Heating element bracket | n/a    | 1        |                                    |         |
| 23   | Door panel (left)       | nss    | 1        | Available as 975183                |         |
| 24   | Left side housing       | n/a    | 1        |                                    |         |
| 25   | Back panel bracket      | n/a    | 1        |                                    |         |
| 26   | Door magnet             | n/a    | 2        |                                    |         |
| 27   | Fan motor               | nss    | 1        | Available as 975176                |         |
| 28   | Door panel (right)      | nss    | 1        | Available as 975183                |         |
| 29   | Right side housing      | n/a    | 1        |                                    |         |
| 30   | Upper inner housing     | n/a    | 1        |                                    |         |
| 31   | Housing                 | n/a    | 1        |                                    |         |
| 32   | Hinge pin               | nss    | 1        | Available as 975183                |         |
| 33   | Decorative strip        | nss    | 2        | Available as 975183                |         |
| 34   | Door hinge (bottom)     | n/a    | 1        |                                    |         |
| 35   | Grid                    | 941454 | 6        |                                    |         |
| 36   | Display PCB             | nss    | 1        | Available as **01**                |         |
| *    | Feet (set of 4)         | 946244 | 1        |                                    |         |
|      |                         |        |          |                                    |         |
|      |                         |        |          |                                    |         |

n/a -> not available

nss -> not sold separately

### Circuit diagram

|  |                    |                        |
|--|--------------------|------------------------|
|  <b>HENDI</b><br>Tools for Chefs<br>Hendi B.V.<br>Steenoven 21<br>3911 TX Rhenen<br>The Netherlands | <b>Batch #</b>     | <b>Appliance part#</b> |
|  | HK033919 and up    | 229033                 |
|  | <b>Description</b> |                        |
| Food dehydrator Profi Line 6-Tray  |                    |                        |

|                 |                               |                   |     |
|-----------------|-------------------------------|-------------------|-----|
| <b>Date</b>     | 25-06-2020                    | <b>Revision #</b> | 1.0 |
| <b>Revision</b> | First Bill of Materials (BOM) |                   |     |

